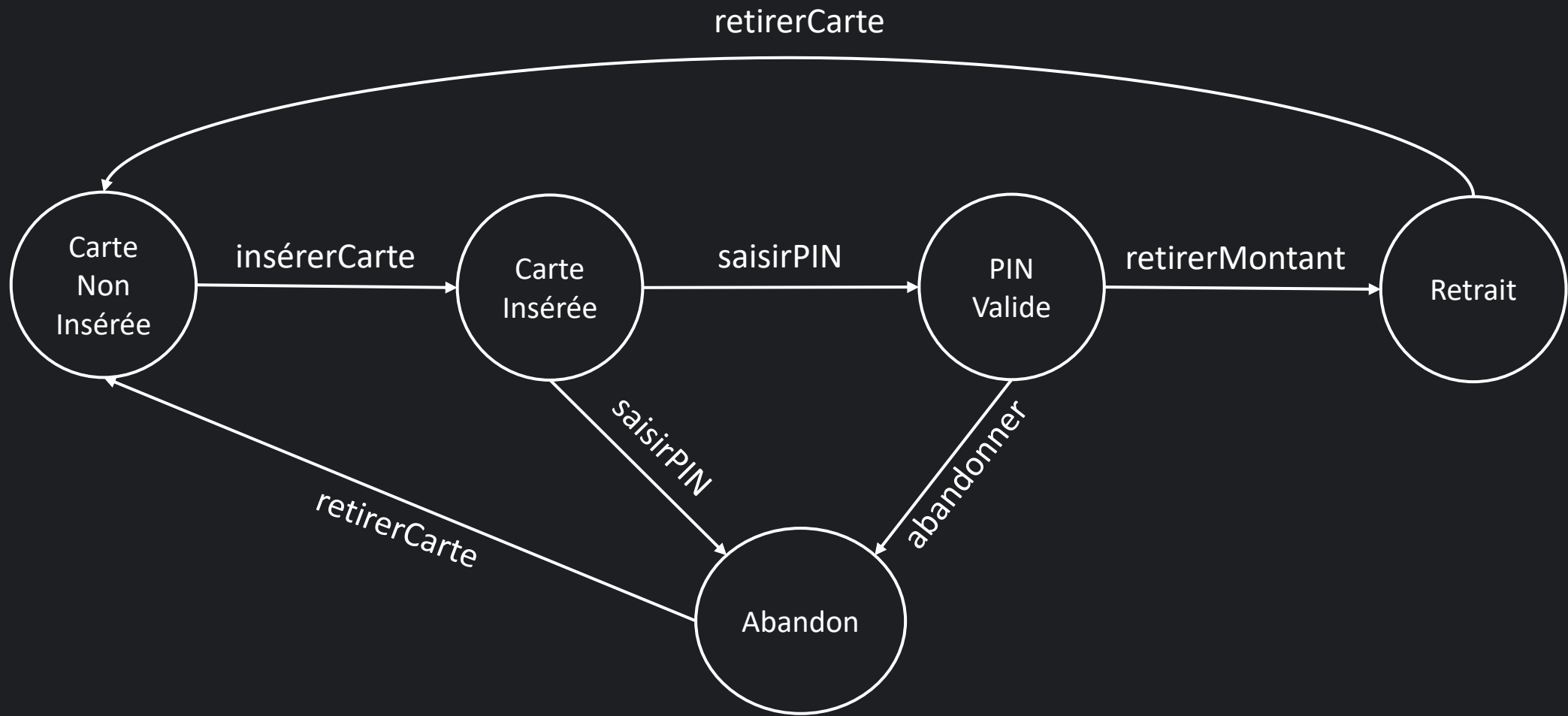


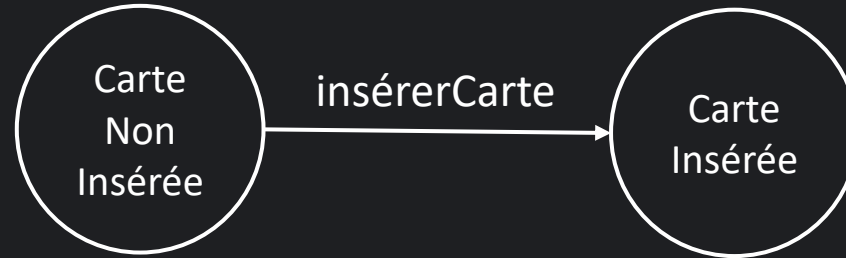
Patron Etat

Patrons de conception

Le problème



DAB
- etatDAB : Etat
+ insererCarte() + retirerCarte() + saisirPIN(short pin) + saisirRetrait(short s) + abandonner()



```

public void insererCarte() {
    switch (this.etat) {
        case ABANDON: /* Impossible */ break;
        case CARTE_INSEREE: /* Impossible */ break;
        case PIN_VALIDE: /* Impossible */ break;
        case RETRAIT: /* Impossible */ break;

        case CARTE_NON_INSEREE:
            etat = Etat.CARTE_INSEREE;
            break;

        default:
    }
}
  
```

DAB

- etatDAB : Etat

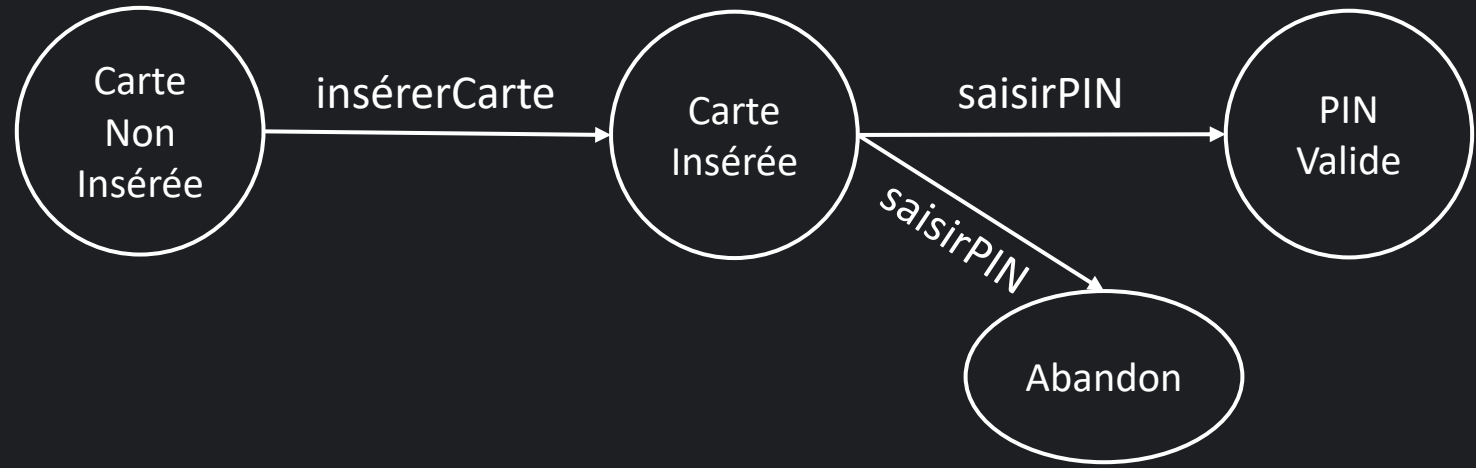
+ insererCarte()

+ retirerCarte()

+ saisirPIN(short pin)

+ saisirRetrait(short s)

+ abandonner()



```
public void insererCarte() {
    switch (this.etat) {
        case ABANDON: /* Impossible */ break;
        case CARTE_INSEREE: /* Impossible */ break;
        case PIN_VALIDE: /* Impossible */ break;
        case RETRAIT: /* Impossible */ break;

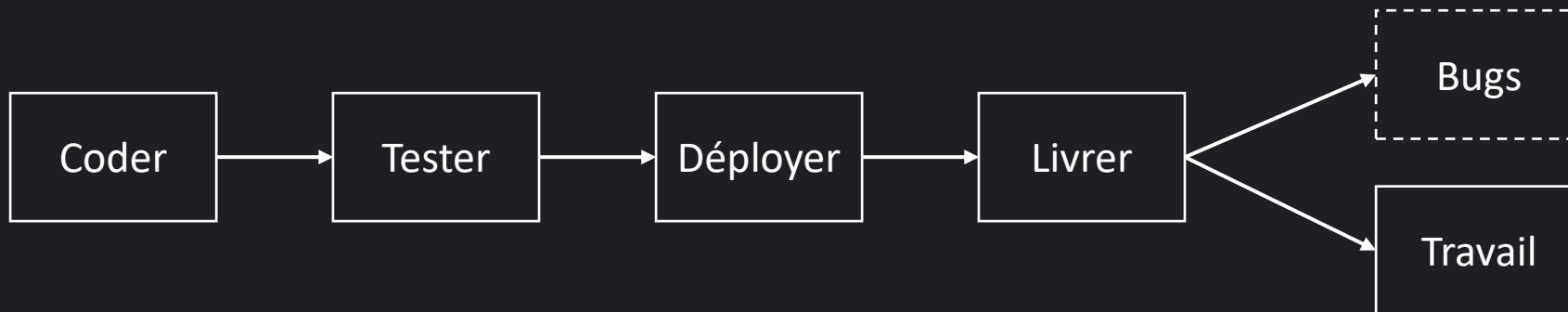
        case CARTE_NON_INSEREE:
            etat = Etat.CARTE_INSEREE;
            break;

        default:
    }
}
```

```
public void saisirPin(short pin) {
    switch (this.etat) {
        case ABANDON: break;
        case CARTE_NON_INSEREE: break;
        case PIN_VALIDE: break;
        case RETRAIT: break;
        case CARTE_INSEREE:
            if(pin == 1234) {
                etat = Etat.PIN_VALIDE;
            } else {
                etat = Etat.ABANDON;
            }
            break;
        default:
    }
}
```

DAB
- etatDAB : Etat
+ insererCarte() + retirerCarte() + saisirPIN(short pin) + saisirRetrait(short s) + abandonner()

```
public void saisirPin(short pin) {  
    switch (this.etat) {  
        case ABANDON: break;  
        case CARTE_NON_INSERTEE: break;  
        case PIN_VALIDE: break;  
        case RETRAIT: break;  
        case CARTE_INSERTEE: ... break;  
  
        case NOUVEAU_ETAT:  
  
        default:  
    }  
}
```



Classe DAB



Classe DAB



Nouveau Etat



Je veux

Ouvert à l'extension et fermé à la modification

Principe Ouvert/Fermé

Patron état

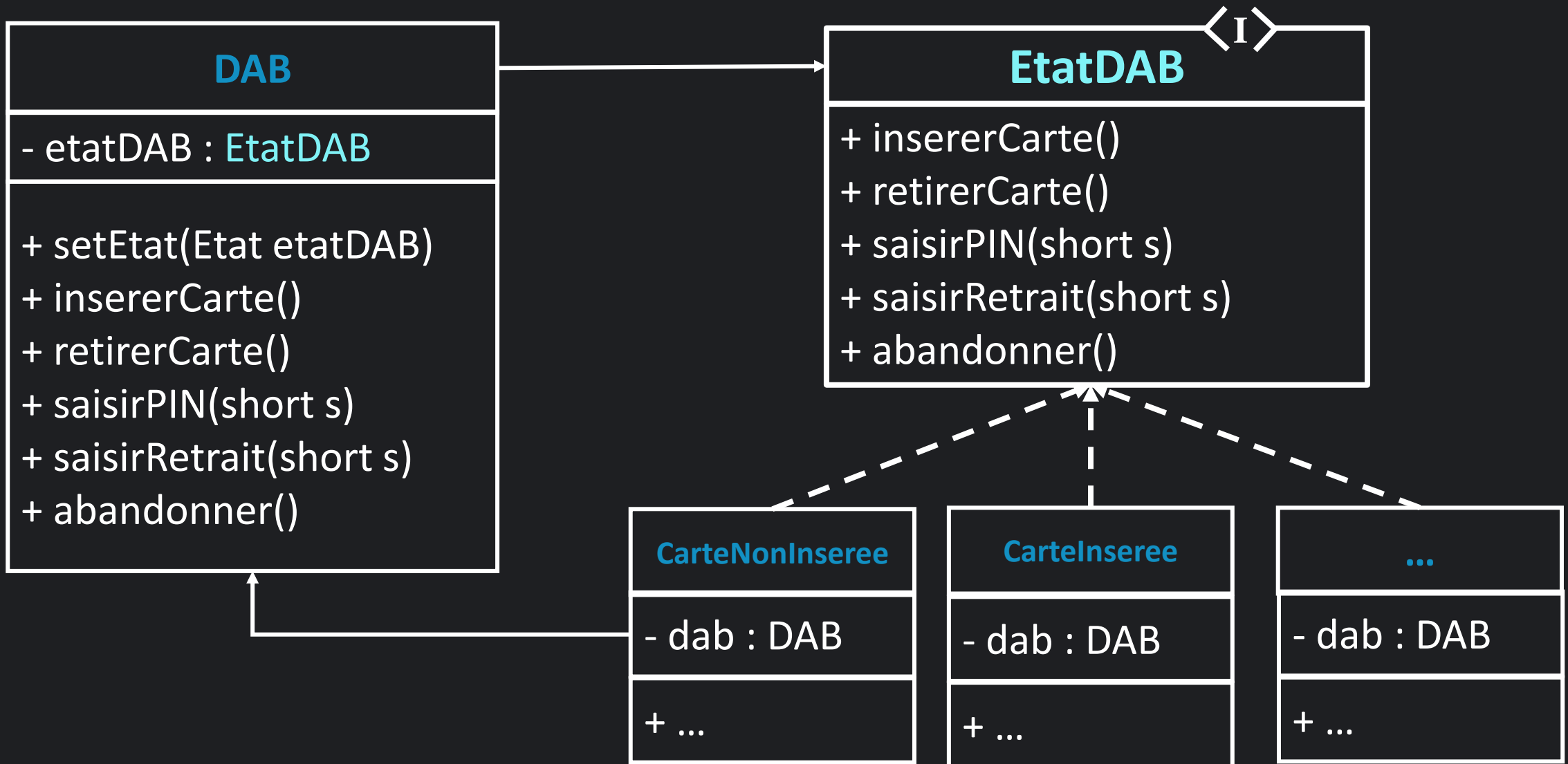
Définition et mise en place

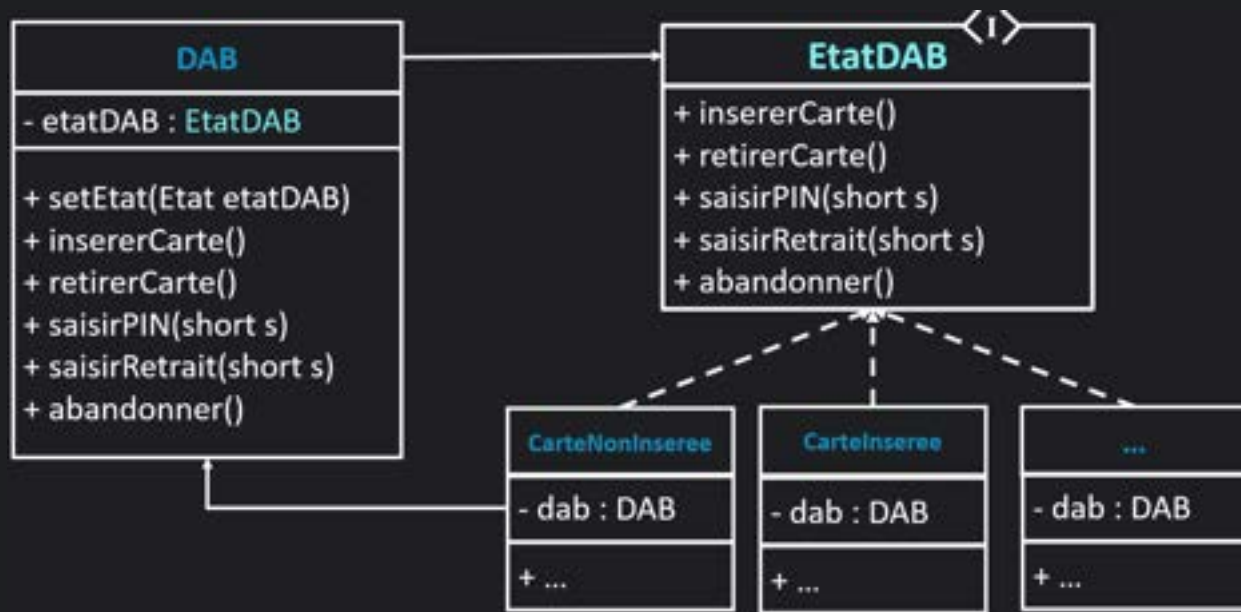
Pouvoir changer le comportement d'un **objet** quand **son état change**, sans pour autant en **changer l'instance**

Patron état

Pouvoir changer le comportement du **DAB** quand **son état change**, sans pour autant en **changer d'instance DAB**

Dans notre cas



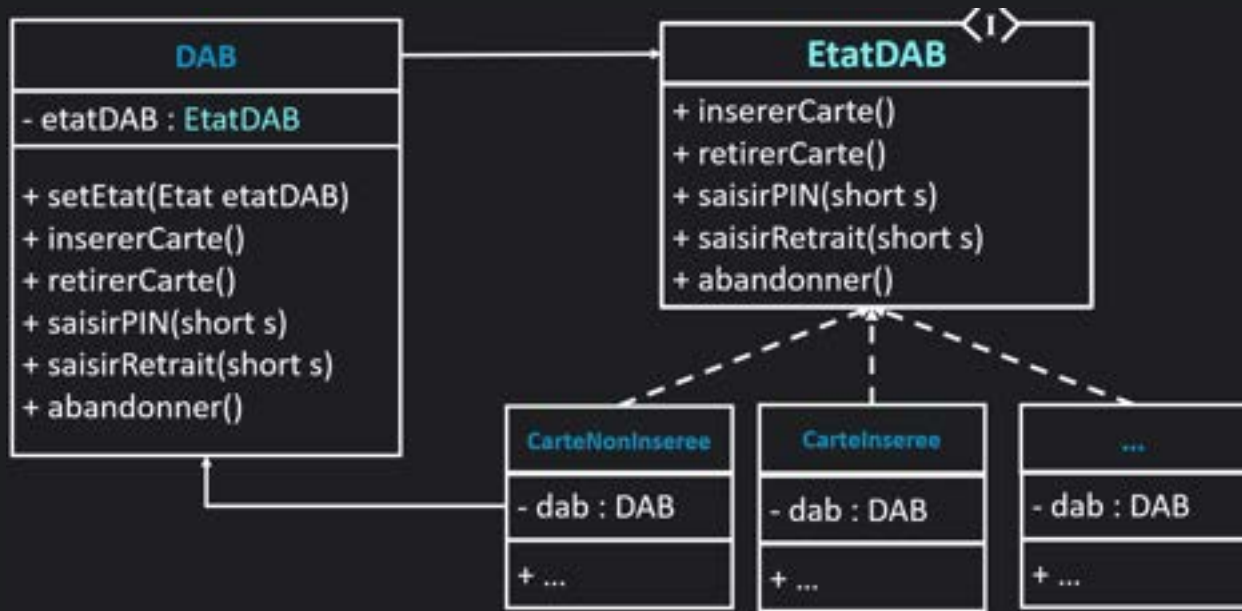


```

public class DAB {
    private Etat etat;

    public DAB() {
        etat = new CarteNonInseree(this);
    }

    void abandonner() { etat.abandonner(); }
    void saisirCode(short code) { etat.saisirCode(code); }
    ...
}
  
```



```

public class DAB {
    private Etat etat;

    public DAB() {
        etat = new CarteNonInseree(this);
    }

    void abandonner() { etat.abandonner(); }
    void saisirCode(short code) { etat.saisirCode(code); }
    ...
}
  
```

```

public class CarteNonInseree implements Etat {
  
```

```

    private DAB dab;
  
```

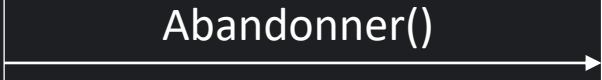
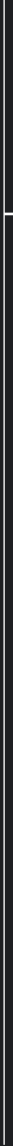
```

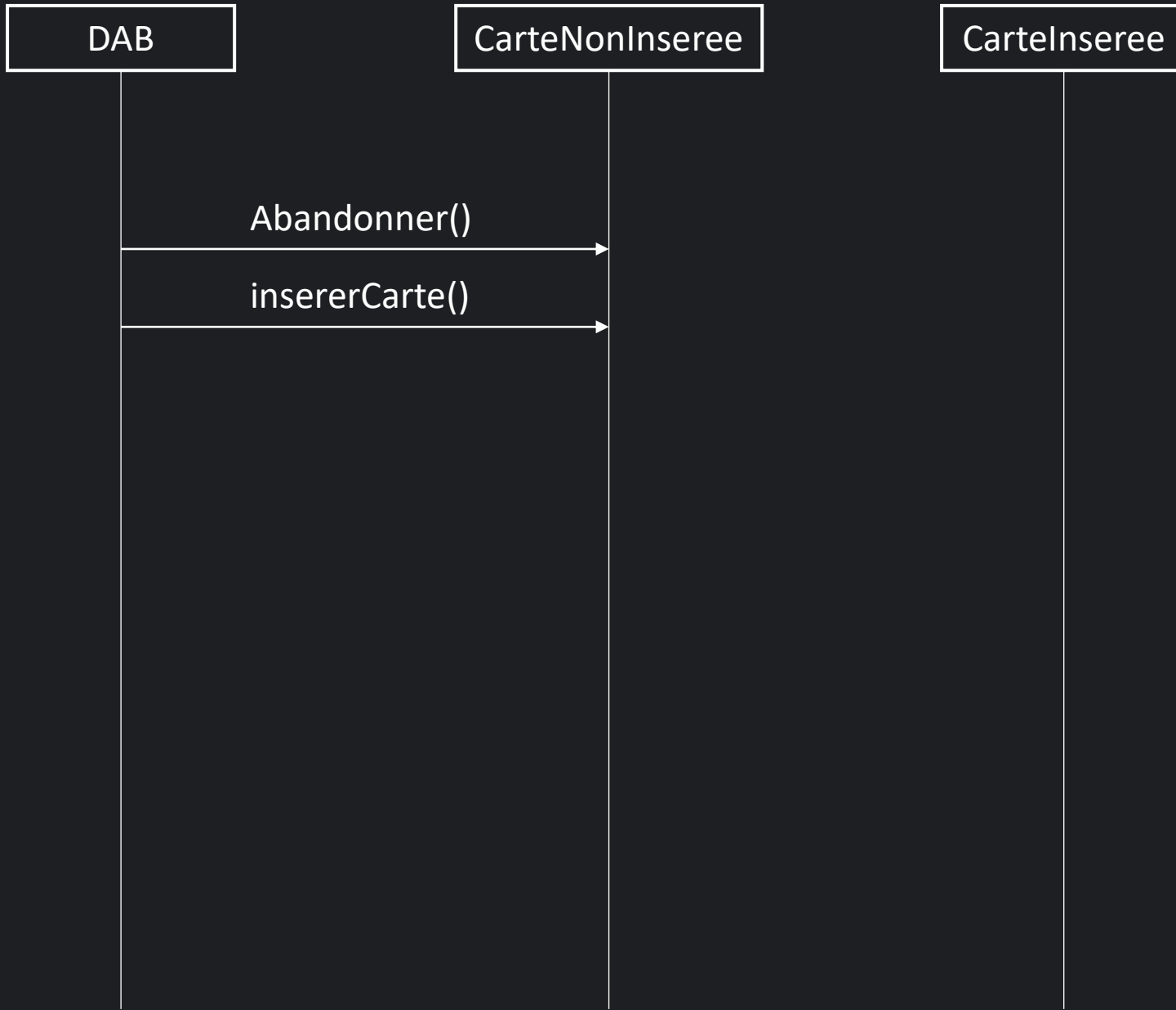
    public CarteNonInseree(DAB dab) {
        this.dab = dab;
    }
  
```

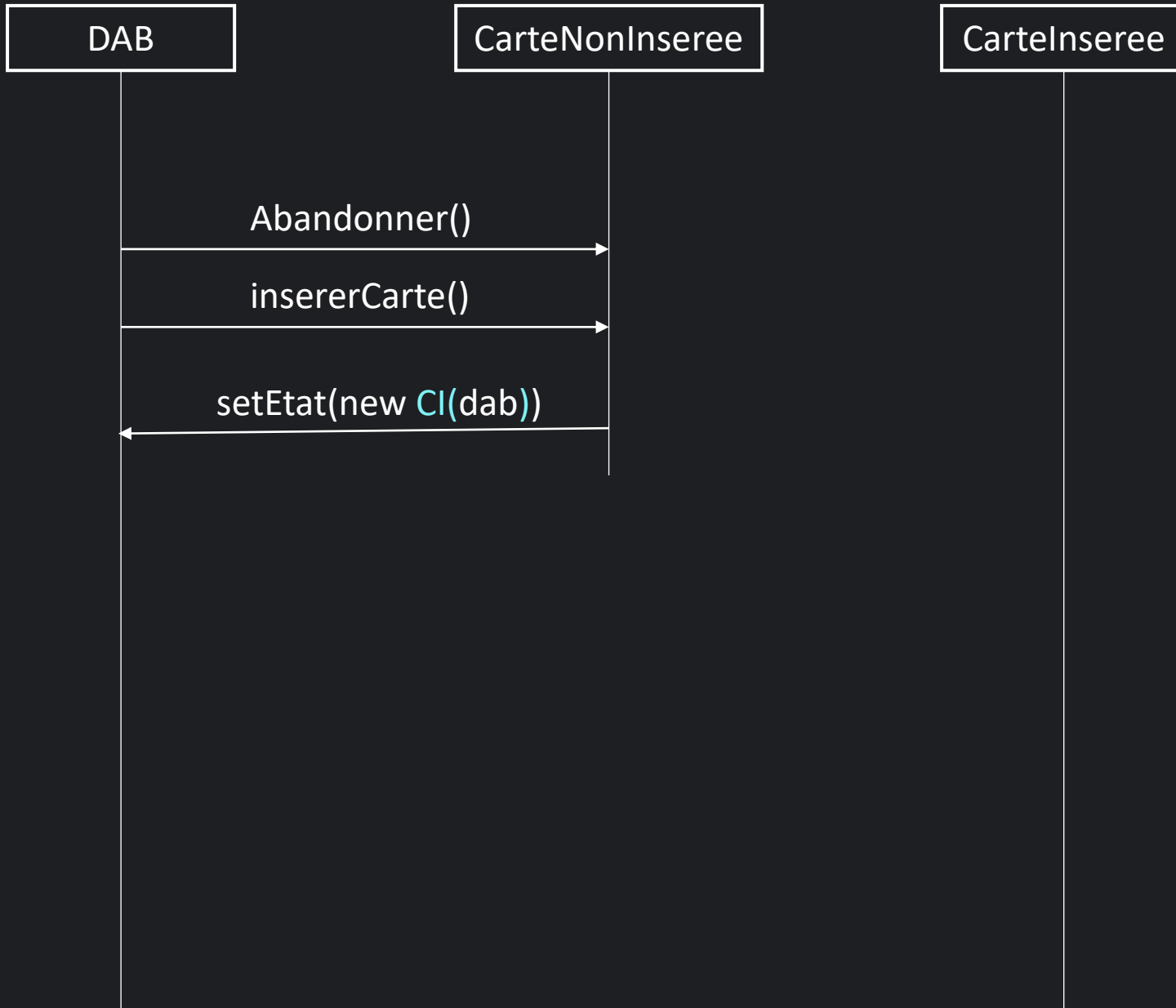
```

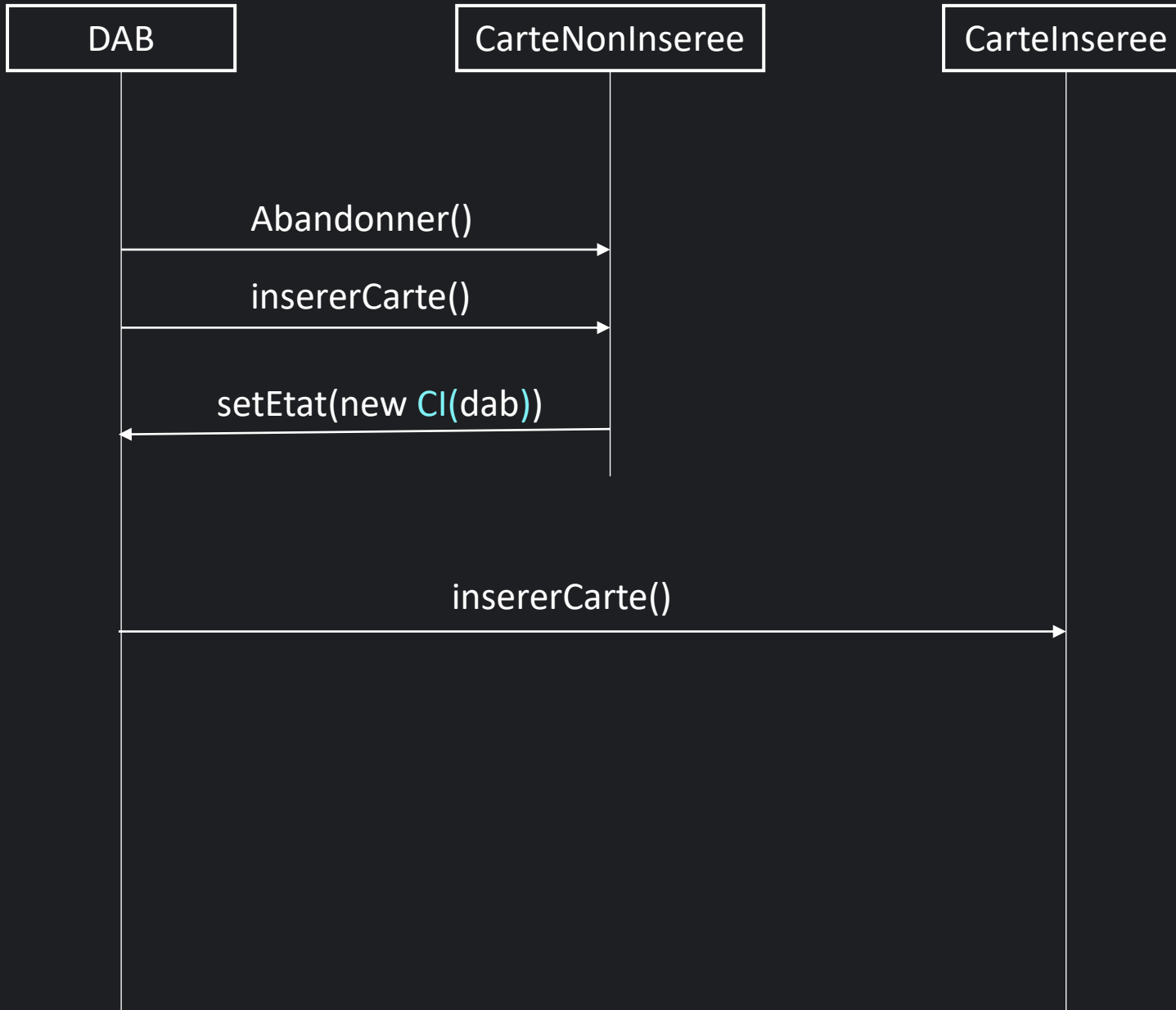
    void abandonner() { /* Impossible */ }
    void insererCarte() { dab.setEtat(new CarteInseree(dab)); }
}
  
```

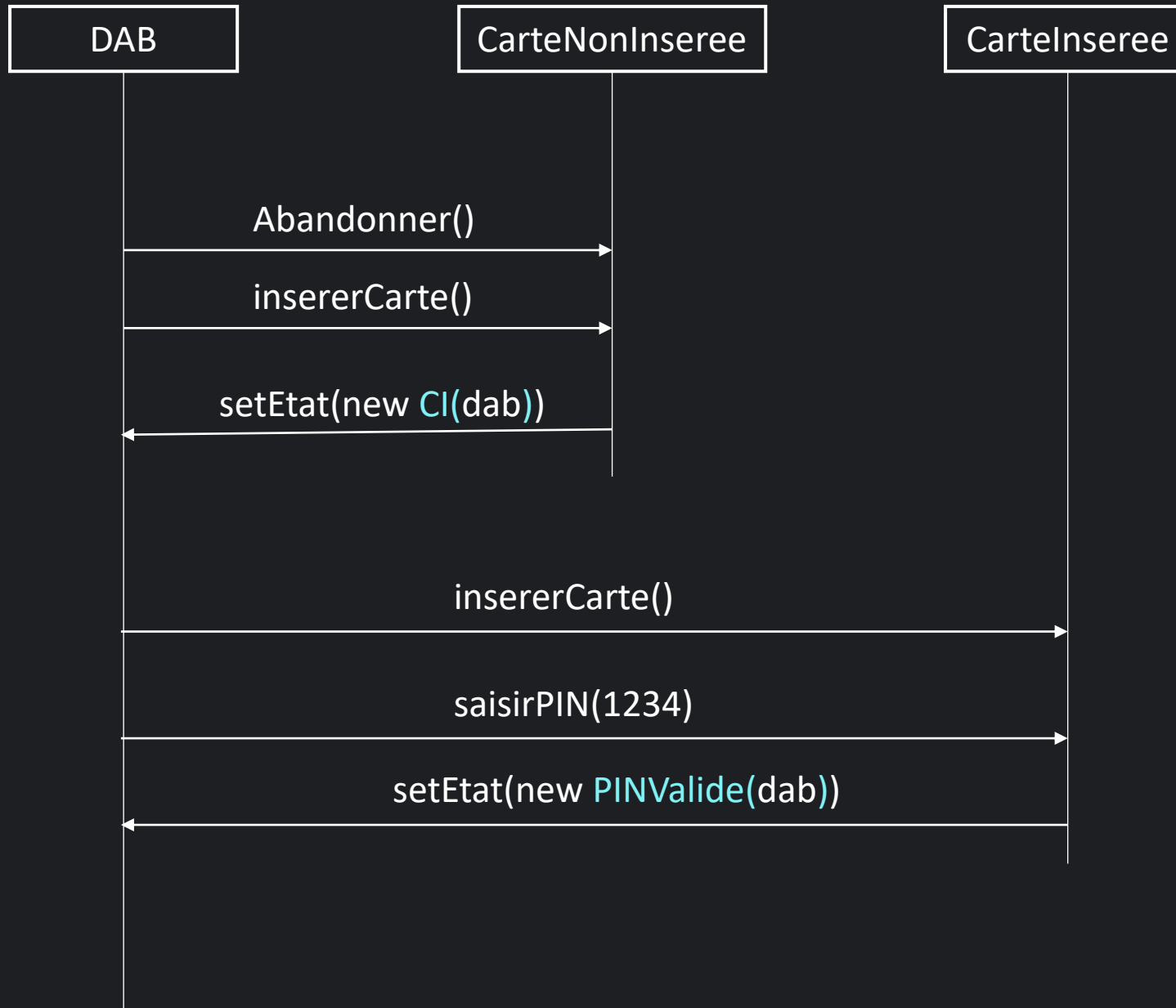












Mise en œuvre

Sans patron Etat

Mise en œuvre

Avec patron Etat

Désavantage

- Obliger d'implémenter toutes les méthodes de l'interface

```
public class Abandon implements Etat {  
  
    private DAB dab;  
  
    public void abandonner() { /* IMPOSSIBLE */ }  
  
    public void insererCarte() { /* IMPOSSIBLE */ }  
  
    public void saisirCode(short code) { /* IMPOSSIBLE */ }  
  
    public void saisirMontant(short code) { /* IMPOSSIBLE */ }  
  
    public void retirerCarte() {  
        dab.setEtat(new CarteNonInseree(dab));  
    }  
}
```

- Obliger d'implémenter toutes les méthodes de l'interface

```
public class Abandon extends EtatAbs1 {  
  
    private DAB dab;  
  
    public void saisirCode(short code) { /* IMPOSSIBLE */ }  
    public void saisirMontant(short code) { /* IMPOSSIBLE */ }  
  
    public void retirerCarte() {  
        dab.setEtat(new CarteNonInseree(dab));  
    }  
}
```

